

Developer Suite 3.2

Configuration for Sample Card

The cards provided in Developer Enterprise Kit 3.2 are supporting both the Standardized Smart Card Web Server (SCWS) and the Near Field Communication (NFC) Technologies. This document detailed how to configure the Developer Suite 3.2 for these specific cards.

Following the steps described below, we will configure:

- Application Manager 3G
- Static Content Explorer
- Mapping of URLs to Servlets

Developer Suite 3.2

Application Manager 3G

Usage

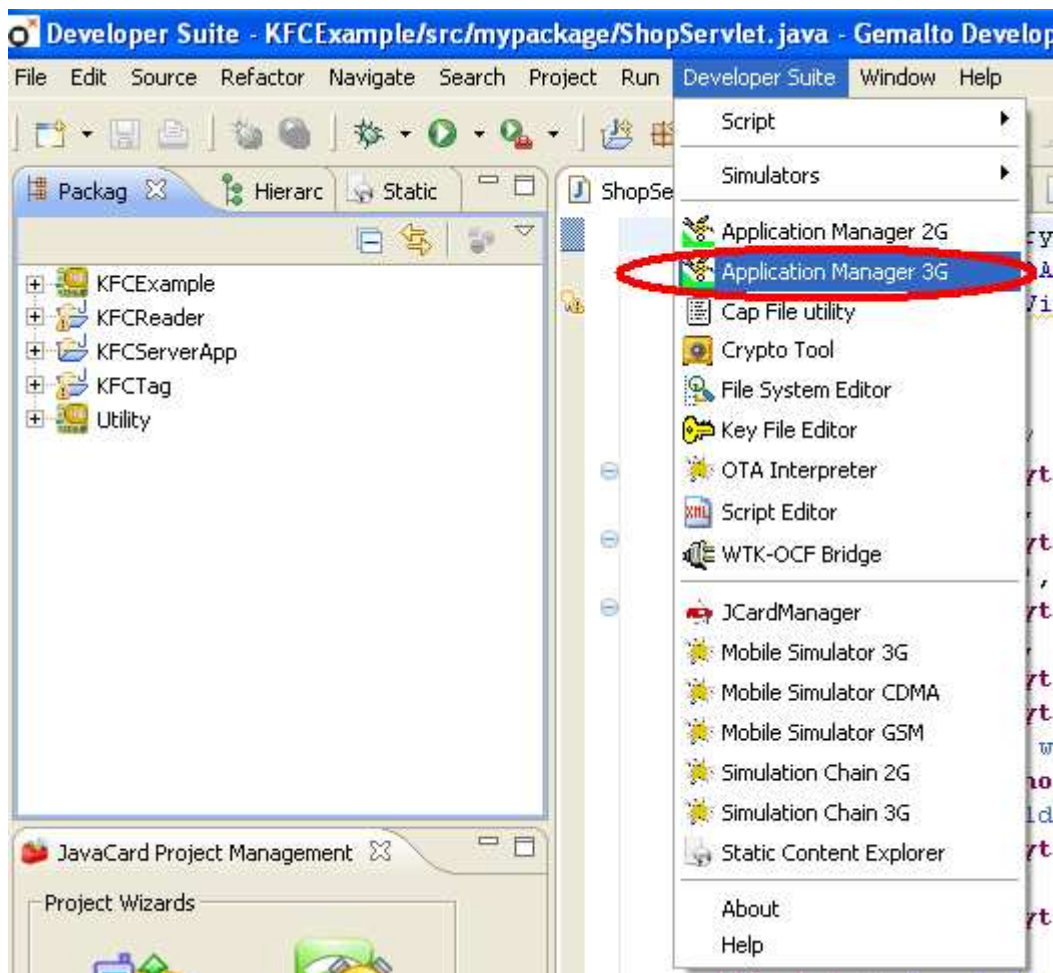
Application Managers are used to Load /Install /Delete Packages /Applets /Servlets /Libraries.

Needed Configuration Files

- DevSuiteSampleCard_mNFC1.0.pef

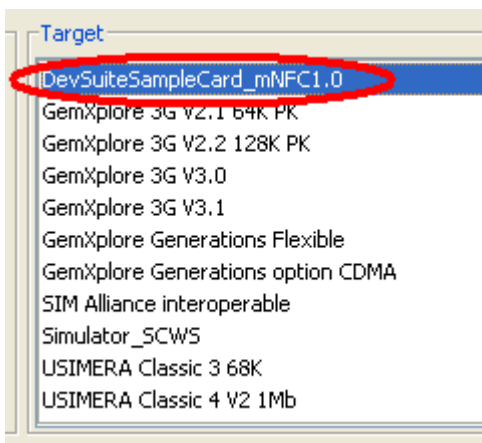
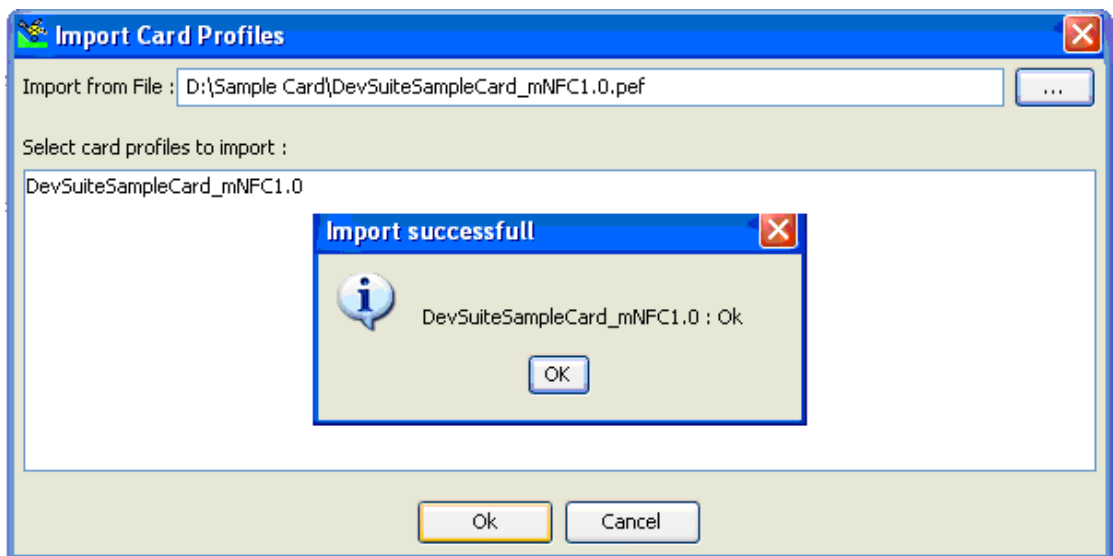
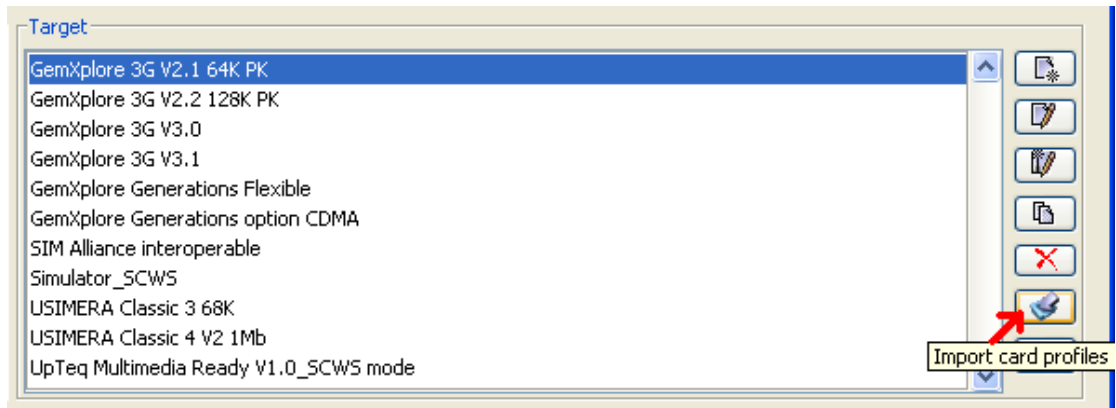
How to proceed?

1. Launch the Application Manager



2. In Application Manager 3G, click on  to import the PEF File for your card.

Developer Suite 3.2



Developer Suite 3.2

Static Content Explorer

Usage

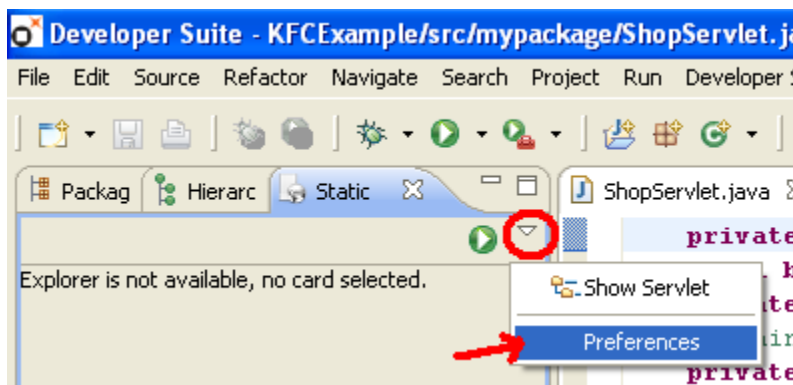
The Static Content Explorer is used to Load/Delete Static Content (HTML pages, images, CSS Files, etc.) and map Servlets to URLs.

Needed Configuration Files

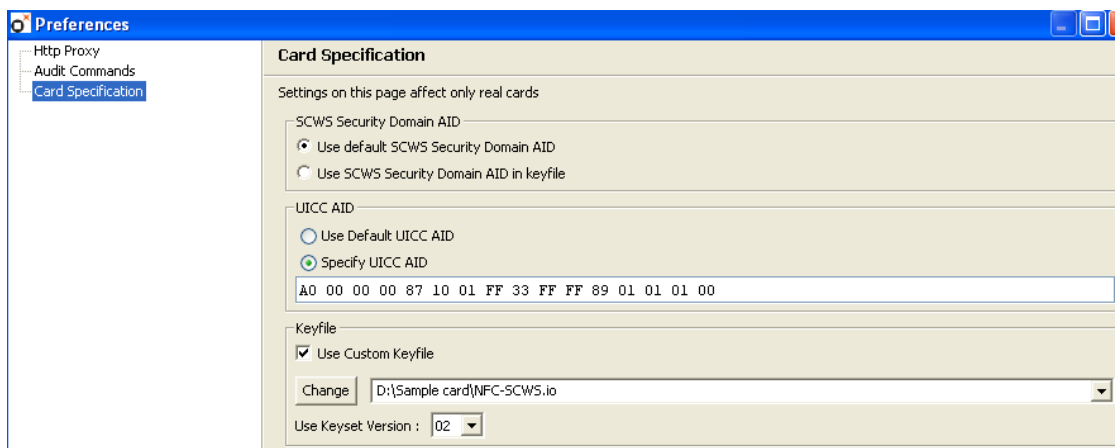
- NFC-SCWS Cards.io

How to proceed?

1. Open the Static Content Explorer
2. Go to the Preferences dialog.



3. In Preferences dialog box, switch to Card Specification section and configure it as follows:



The Specific AID is A0 00 00 00 87 10 01 FF 33 FF FF 89 01 01 01 00

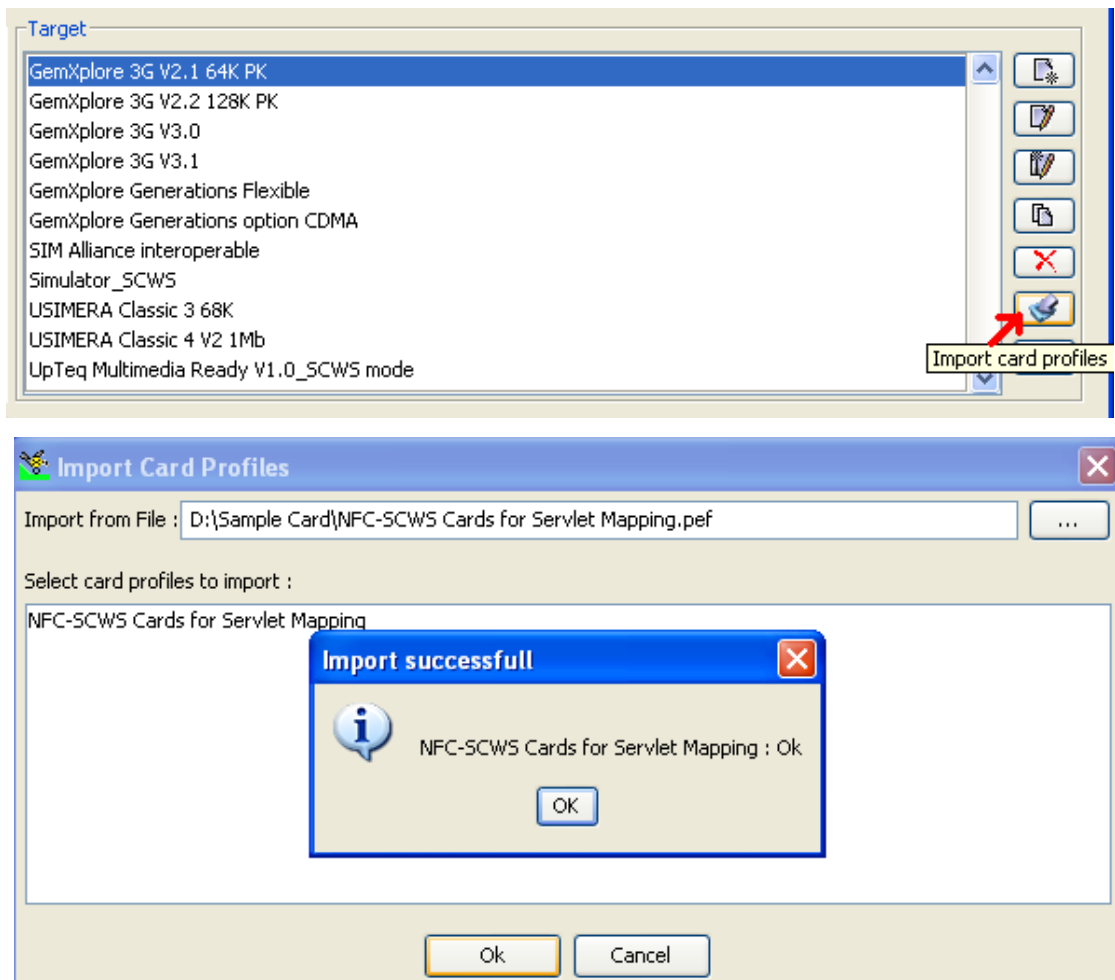
Servlets – URL Mapping

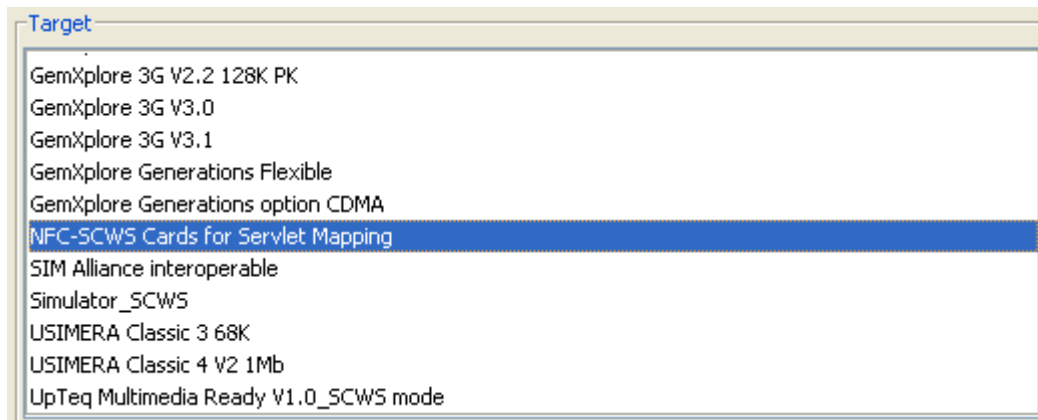
Needed Configuration Files

- NFC-SCWS Cards for Servlet Mapping.pef

How to proceed?

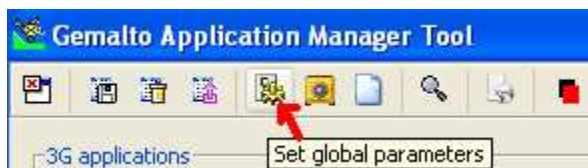
1. In Application Manager 3G, click on  to import the PEF File for your card.



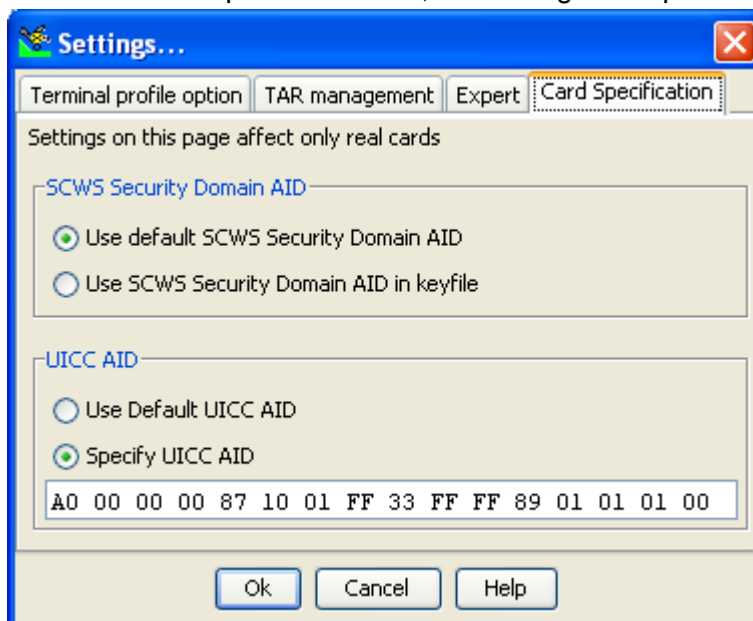


2. We will be using the SCWS Security Domain, so switch to the target “NFC-SCWS Cards for Servlet Mapping”
3. We also need to correctly specify the Specific UICC AID in the Global Settings.

In Application Manager, click on  icon to open the Settings dialog.



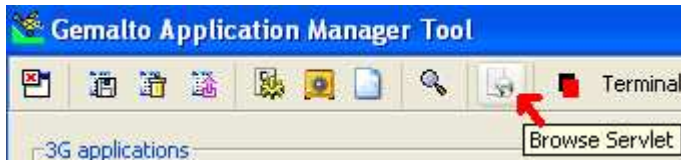
Switch to Card Specification tab, and configure as picture below:



The Specific AID is A0 00 00 00 87 10 01 FF 33 FF FF 89 01 01 01 00

Developer Suite 3.2

Now you are ready to browse servlets in sample card with Developer Suite - Application Manager tool by clicking Browse Servlet icon.



To be able to test this feature, you should have servlet loaded into the sample card.

You may take KFC example as a reference, which is provided at <http://developer.gemalto.com/home/dev-tools/developer-suite/examples/kfc-example.html>